



**REGIONAL FIRE AUTHORITY  
PLANNING COMMITTEE  
November 20, 2014**

<b>Present:</b> Jay Covington, Chief Admin Officer Marcy Palmer, Renton City Council Ed Prince (Chair), Renton City Council Mark Chubb, Chief KCFD #20 Iwen Wang, FIT Administrator Armondo Pavone, Renton City Council	Mark Peterson, Fire Chief Chad Michael, Deputy Fire Chief Kerry Abercrombie, KCFD #25 Julie Bray, KCFD #25 District Liaison Lt. Will Aho, Local 864 Capt. John Hettick, Renton Fire
--	--

**Approval of Previous Minutes** – Councilperson Pavone made a **motion** to approve the minutes as written; **seconded** by Councilperson Palmer. **Motion passed unanimously.**

1. **RFA Plan Section 7 (Organizational Structure)** – Chief Peterson went through his recommendations for the RFA organizational structure:

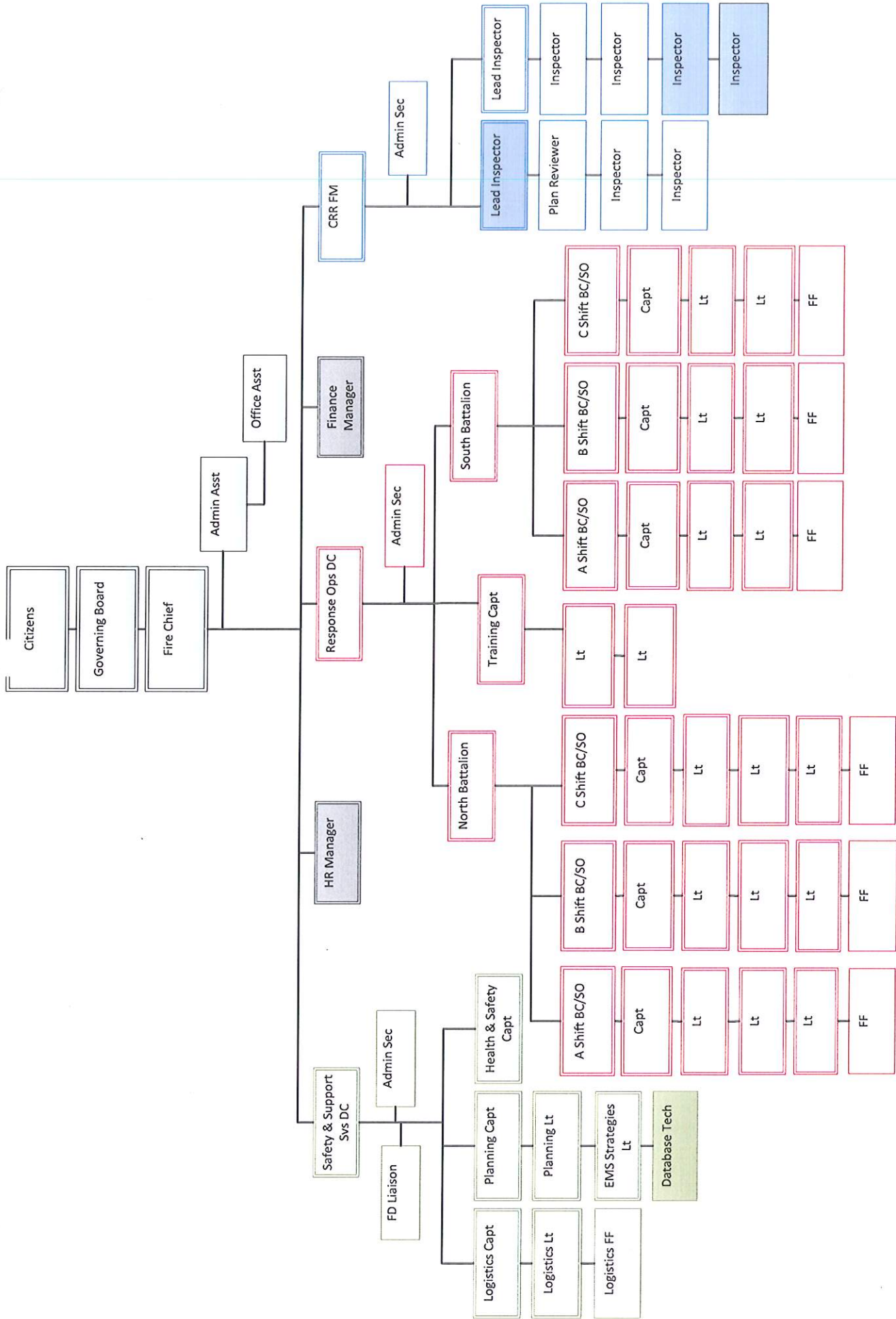
- There are several positions that need to be filled immediately:
  - Human Resources Manager – Hiring, organizational restructure, etc.
  - Finance Manager – Budget set-up, arrange for tax collection, etc.
  - DataBase Technician – With all of the various specialized applications used by the department, a DB Tech would be necessary right away. They would work closely with the City of Renton to maintain access to the City's servers, mail system, etc.
  - HazMat Inspector – Would be moved to Safety & Support Services and reclassified as an EMS Strategies Lieutenant.
  - Fire Inspectors (CRR) – There are 3 proposed new inspector positions.
- Some of the other things to consider:
  - Labor Agreements – There are 3 labor groups involved; Local 864 (Firefighter's), Battalion Chief Local, and Local 2170 (Civilians). Kent did not maintain their civilian labor agreements.
  - Fleet Maintenance – It is recommended that the RFA contract with the City for now.
  - Health Insurance – The RFA could either join a pool plan or buy into the City plan.
  - Payroll and Accounting – The RFA could either contract out (to the City or other company), or keep it in-house.
  - Information Technology (IT) – The RFA will need to tie into the City servers, Permitting, email, etc.
  - Communication – It is recommended that this position stay in house. Having a person in-house would enable the RFA to take advantage of the many social networking sites to disperse information.
  - LEOFF I Retirees – It is recommended that the City maintain the program.
  - Civil Service Board – It is recommended that the City maintain the Board.

2. **RFA Plan Section 6 (Funding & Finance)** - Ms. Wang gave a presentation on the Financing Plan (attachments):
- Construction and apparatus for Station #15 and the 5.3 million obligation for Fire Station #13 will be handled by the City and is factored into the costs.
  - The City's insurance coverage would not extend to the RFA. The RFA would need to provide coverage for auto, property, liability, etc.
  - The City could realize a cost savings of \$5.5 million.
  - Boeing will not pay the Benefit Service charge since they have a fully accredited fire department of their own. However, they are still subject to the \$1.00/\$1000.00 property tax.
  - The taxpayer benefit is listed at the bottom of the worksheet.
  - Fire Related Facilities – Ms. Wang presented a proposal regarding asset transfer to include stations and equipment. The City proposes to maintain ownership of Stations #11 & #12, while ownership of Stations #13, #14 & #16 would transfer to the RFA.
3. **RFA Plan Section 8 (Operations and Services)** – Chief Peterson gave a brief presentation on the types of services the RFA would maintain:
- The RFA would be responsible for the following areas:
    - Fire Prevention (including Public Education) – They would like to have a public outreach program, and someone to track trends in fire calls.
    - Fire Investigation – Any criminal activity would need to be followed up by the Police Department and the Prosecutor. The investigators will need to work closely with both departments.
    - Emergency Management – Emergency Management would be retained by the City due to their interaction with other departments.
    - Per Fire District #40's attorney, the current service agreement between the City and the District does not have an assignability clause. The city would need to address this with the District 40 Board of Commissioners prior to assigning the contract to the RFA.
4. **Citizens Advisory Committee** – Chief Michael reported that 5 people have committed to serve as members of the committee and he is waiting for a number of phone calls to be returned from community members that have been contacted. He reviewed the proposed Purpose, Objectives and Time Line statement (attached). The committee will start up in January (after the holidays).
5. **Future Meeting Dates and Times** – The next Committee meeting is scheduled for January 22<sup>nd</sup>, 2015 at 2:00 pm in the Conferencing Center at City Hall.

Meeting adjourned at 3:35 pm.

Recorded by:

Julie Bray, District #25 Liaison



## Proposed Staffing

Division	Current Staffing	Change	Notes	Proposed Staffing
Administration	3	2	+1 HR Mgr +1 Fin Mgr	5
Response Operations	137	15	+15 FF for FS15, initially assigned to supplement other units	152
Community Risk Reduction	9	2	-1 Haz Mat Insp to S&S +3 Inspector	11
Safety & Support	9	2	+1 Haz Mat Insp from CRR +1 DB tech	11
Emergency Management	3	(3)	Remain with City	-
Department Total	161	18		179



## Fire Related Facilities

(with building contents)

Facility	Year Built	Effective Yr	Address	Land Sf	Impv SF	Transfer/Lease*	Auxiliary Use/Notes
FS 11	1979	1985	211 Mill Ave S	28,750	21,000	L	Part of museum/old CH campus
FS 12	2004	2004	1209 Kirkland Ave NE	53,255	15,800	L	EOC/IT Backup facility
FS 13	2007	2007	18002 108th SE	37,956	20,521	T	Emergency and Backup Fueling Facility (right to use agreement??)
FS 14	1996	1996	1900 Lind	261,781	13,659	T	
Fire Training	1996	1996	1900 Lind	(included in above)		T	
FS 15*			334210-3245	23,766	7,500	T	Assume 1/2 of the site is set-aside for water tank/reservoir with access easement from FS15
FS 16	1974	1984	12923 156th Ave SE	58,806	7,732	T	
* Proposed Kennydale Station: 3-bays, 7500 sf, total land area is 47,500 sf							
** RFA to lease facilities at \$1 a year so long as the facility is used for Fire purpose. RFA is responsible for all maintenance and operating as well as repairs/rehabs costs of all facilities.							
FS 17	1970	1985	14810 Petrovitsky Rd SE	54,310	6,836	NA	FD40 property, part of service contract w/ FD40

# Discussion Draft Fire Vehicles and Equipment

EQ #	Department	Maint	License #	Model	Manu Model ID	VIN	Description	Depa Division	Total Costs	Total Costs
F095A	POOL38	1200	48350D	2009	FORD ESCAPE	1FMCU59339KA1	2009 FORD ESCAPE HYBRID	Fire Admin	27,184	27,184
F096A	POOL38	1200	48351D	2009	FORD ESCAPE	1FMCU59359KA1	2009 FORD ESCAPE HYBRID	Fire Admin	27,184	27,184
F097A	POOL38	1200	48352D	2009	FORD ESCAPE	1FMCU59379KA1	2009 FORD ESCAPE HYBRID	Fire Admin	27,184	27,184
F098A	POOL38	1200	48353D	2009	FORD ESCAPE	1FMCU59339KA1	2009 FORD ESCAPE HYBRID	Fire Admin	27,184	27,184
F099A	POOL38	1200	48354D	2009	FORD ESCAPE	1FMCU59359KA1	2009 FORD ESCAPE HYBRID	Fire Admin	27,184	27,184
F100A	POOL38	1200	48355D	2009	FORD ESCAPE	1FMCU59379KA1	2009 FORD ESCAPE HYBRID	Fire Admin	27,184	27,184
F078	POOL39	1300	18016D	1997	FORD TAURUS	1FALP52U4VA194	TAURUS GL	Fire Prevention and	15,070	-
F078-Rplc	POOL40	1300	2014	2014	FORD NEW Pickup Truck			Fire Prevention and	37,000	37,000
F062	POOL39	1300	56191D	1999	FORD TAURUS	1FAPF52U4XG152	FORD TAURUS 4 DR	Fire Prevention and	15,974	-
F062-Rplc	POOL40	1300	2015	2015	FORD NEW			Fire Suppression	22,000	22,000
F084	POOL38	1400	35609D	2003	DMC+ INTREPID	2B3HD46R94H611	2003 DODGE INTREPID	Fire Admin	15,761	15,761
F079	POOL40	1400	18182D	2001	FORD CROWN VII	2FAFP71W9X1161	CROWN VICTORIA	Fire Suppression	22,567	22,567
F429	POOL52	1500	49249D	2002	FORD FOCUS	1FAHP36352W181	2002 FORD FOCUS	Fire Suppression	19,500	19,500
F083	POOL38	2010	35610D	2003	CHEV BLAZER	1GNDT13X13K16E	2003 CHEVROLET BLAZER	Fire Admin	22,468	22,468
F086	POOL38	2010	43848D	2007	FORD ESCAPE	1FMYU93167KA6	2007 FORD ESCAPE	Fire Admin	20,003	20,003
F087	POOL38	2010	44111D	2008	FORD ESCAPE	1FMCU93188KA3	2008 FORD ESCAPE XLT	Fire Admin	18,165	18,165
F104	POOL38	2010	53024D	2012	FORD ESCAPE	1FMCU93C7CKA1	2012 FORD ESCAPE	Fire Admin	19,883	19,883
F077	POOL39	2010	18163D	2001	DMC+ CHEROKEE	1J4FF48501L5307	JEEP 4X4	Fire Prevention and	22,959	22,959
F089	POOL39	2010	44110D	2008	FORD ESCAPE	1FMCU931X8KA3	2008 FORD ESCAPE XLT	Fire Prevention and	18,165	18,165
F090	POOL40	2010	45102D	2008	FORD ESCAPE	1FMCU93118KA3	2008	Fire Suppression	18,165	18,165
F082	POOL38	2020	35098D	2003	FORD EXPEDITION	1FMPU16L83LB01	FORD EXPEDITION	Fire Admin	28,948	28,948
F109	POOL38	2020	56473D	2013	CHEV TAHOE	1GNSK2E0XDR337	CHEVROLET TAHOE	Fire Admin	32,497	32,497
F434	POOL52	2020	49250D	2004	CHEV TAHOE	1GNEK13294J249	2004 CHEVROLET TAHOE	Fire Suppression	31,000	31,000
F438	POOL52	2020	49253D	2007	CHEV TAHOE	1GNFK03067R363	2007 CHEVROLET TAHOE	Fire Suppression	31,000	31,000
F080	POOL40	2020	33121D	2001	FORD EXCURSION	1FMNU41511ED2	COMMAND VEHICLE	Fire Suppression	78,274	78,274
F436	POOL52	2060	49252D	2005	CHEV PU	1GCEK19V85E232	2005 SILVERADO 1500	Fire Suppression	25,000	25,000
F088	POOL39	2060	45535D	2008	FORD F250	1FTSX21518EB157	2008 FORD F250 4X4	Fire Prevention and	24,081	24,081
F107	POOL40	2080	55773D	1991	ISUZU FTR	JALM7A1N4M320	ISUZU TRUCK	Fire Suppression	-	-
F068	POOL46	2085	18118D	1999	FORD F550	1FDAF57F3XEE93	FORD F-550 4 X 4	Fire Dive Team	32,631	32,631
F091	POOL40	2085	45577D	2008	FORD F550	1FDAW57R78EB4	2008 FORD F550 CREW CAB	Fire Suppression	41,912	41,912
F044	POOL40	2300	07274D	1990	CHEV HI CUBE V	1GCKP32K3L3311	HAZ MAT VAN	Fire Suppression	31,143	-
F044-Rplc	POOL40	2300	2015	2015	CHEV NEW			Fire Suppression	350,000	350,000
F108	POOL38	2330	55953D	2000	CHEV ASTRO	1GNDM19VWXYB2	CHEVROLET ASTRO VAN	Fire Admin	-	-
F066	POOL39	2330	18106D	1999	GMC SAVANA	1GKFG15R3X1150	GMC SAVANA VAN	Fire Prevention and	20,750	-
F066-Rplc	POOL40	2330	2015	2015	GMC NEW			Fire Suppression	25,000	25,000
F067	POOL38	2330	18112D	1999	GMC SAFARI	1GKDM19W9XB5	GMC SAFARI VAN	Fire Admin	22,995	-
F067-Rplc	POOL40	2330	2015	2015	GMC NEW			Fire Suppression	25,000	25,000
F2514	POOL41	2385	56190D	2001	INTE 4700	1HTSLAAL31H347	INTERNATIONAL/BRAUN AID UNI	Fire Suppression	132,276	132,276
F065	POOL40	2385	18125D	1999	INTE 4700	1HTSLAAL6YH697	INTERNATIONAL/BRAUN AID TRU	Fire Suppression	133,476	133,476
F072	POOL40	2385	18133D	2000	INTE 4700	1HTSLAAL1YH261	INTERNATIONAL/BRAUN AID TRU	Fire Suppression	128,999	-
F072-Rplc	POOL40	2385	2014	2014	NEW			Fire Suppression	250,000	250,000
F110	POOL40	2385	57314D	2013	INTE 4400	3HAMRAZL1EL78C	INTERNATIONAL BRAUN NW AID	Fire Suppression	220,725	220,725
F111	POOL40	2385	57313D	2013	INTE 4400	3HAMRAZLXL78C	INTERNATIONAL 4400 BRAUN AID	Fire Suppression	220,725	220,725
F2513	POOL41	2500	55958D	1996	EONE PUMPER	4EN3AAA82T1006	1996 E-ONE PUMPER	Fire Suppression	267,441	-
F2513-Rplc	POOL40	2500	2016	2016	EONE NEW			Fire Suppression	510,000	510,000
F2515	POOL41	2500	56189D	2003	EONE CYCLONE II	4EN3AAA8431006	2003 EONE PUMPER SO# 126791	Fire Suppression	397,003	397,003
F057	POOL40	2500	17260D	1996	EONE PUMPER	4EN3AAA88T1006	1996 E-ONE "CYCLONE"	Fire Suppression	267,441	-
F057-Rplc	POOL40	2500	2014	2014	EONE NEW			Fire Suppression	510,000	510,000
F061	POOL40	2500	18052D	1998	EONE CYCLONE II	4EN3AAA82W100	E-ONE PUMPER	Fire Suppression	268,463	-
F061-Rplc	POOL40	2500	2015	2015	EONE NEW			Fire Suppression	510,000	510,000
F071	POOL40	2500	18132D	1999	EONE CYCLONE II	4EN3AAA84X1000	E-ONE PUMPER	Fire Suppression	315,766	315,766
F073	POOL40	2500	18140D	2000	EONE CYCLONE II	4EN3AAA86X1000	E-ONE PUMPER SO#20688	Fire Suppression	312,508	312,508
F074	POOL40	2500	18141D	2000	EONE CYCLONE II	4EN3AAA88X1000	E-ONE PUMPER SO# 20689	Fire Suppression	312,508	312,508
F085	POOL40	2500	41404D	2005	EONE CYCLONE II	4EN3AAA8951009	2005 EONE CYCLONE PUMPER	Fire Suppression	393,592	393,592
F093	POOL40	2500	48335D	2008	EONE PUMPER	4EN3AAA8881003	2008 E-ONE PUMPER - SO# 13354	Fire Suppression	494,531	494,531
F075	POOL40	2501	18134D	2000	EONE AERIAL	4EN3ABA85X1000	95' AERIAL PLATFORM SO#12084	Fire Suppression	676,802	676,802
F105	POOL40	2501	54070D	2011	EONE AERIAL	4EN3ABA89B1006	2011 EONE AERIAL 100' SO#1364	Fire Suppression	1,004,969	1,004,969
F101	POOL38	5060		2008	CLUB INTELTRAK	SY0819-900173	2008 CLUB CAR INTELLITRAK 4X4	Fire Admin	-	-
F070	POOL46	6425	18116D	1999	CALK TFM 17175	1CXBT1714XS905	DIVE BOAT TRAILER	Fire Dive Team	1,037	1,037
F430	POOL52	6425	58570C	1995	TURT WATERTAN	PH06L6691	1995 TURTLE WATER TANK 400 G	Fire Suppression	-	-
F092	POOL39	6425	45540D	2007	CARG T8818TA3	5NHUTBT297T412	2007 CARGOMATE TRAILER	Fire Prevention and	7,572	7,572
F094	POOL39	6425	49210D	2008	EGLE UTILITY	184BU14188A005	2008 EAGLE UTILITY TRAILER	Fire Prevention and	-	-
F106	POOL40	6425	55768D	2000	FABR FOAM TRAI	16MPF1225YD02E	2000 FABRIQUE FOAM TRAILER	Fire Suppression	-	-
F103	POOL38	6820	WN52635	2010	PLRS SPIRIT	ZYPBY24PA808	2010 POLARIS SPIRIT INFLATABLE	Fire Admin	39,637	39,637
63									\$ 8,626,482	\$ 7,588,206

Fire District 40 Equipment to be maintained by RFA as part of FD40 service contract

F431	POOL52	2385	62992C	2002	FORD AID UNIT	1FDWE35F22H801	2002 FORD AID UNIT	Fire FD40	350,000	-
F439	POOL52	2385	97632C	2011	INTE 4400	1HTMRAZL6BH37	2011 INTERNATIONAL AID UNIT	Fire FD40	265,964	-
F432	POOL52	2500	65655C	2003	SPAR PUMPER	457AT40983C043	2003 SPARTAN PUMPER	Fire FD40	600,000	-
F437	POOL52	2500	77001C	2006	SPAR PUMPER	457AT2C946C054	2006 SPARTAN PUMPER	Fire FD40	600,000	-



# RFA Cost Estimate based on 2016 Department Budget

Estimated Fire Authority Cost	Current Service Level	Enhancement 15 FF+3hsp	Total W/ Add'l FTE	Impact on City Resources
Operating Expenses				Operating Expenses Saved
Pay/1	17,415,170	1,659,860	19,075,030	17,415,170 Pay
Benefit/2	5,679,134	594,652	6,273,786	5,679,134 Benefit
Nonpersonnel costs other than Interfund charges	1,585,768	177,291	1,763,059	1,585,768 Nonpersonnel costs other than Interfund charges
FS13 DS (net of Excess Levy Received by FD40) <sup>1,2</sup>	500,634	474,937	975,571	
Direct Department Operations	25,180,706	2,906,740	28,087,446	24,680,072 Direct Department Operations
Internal Services				Assume 50% cost will continue
IT/92	779,036	87,097	866,133	389,518 IT/92
Communications/93	114,371	12,787	127,158	57,186 Communications/93
Fleet/95	1,449,345	162,039	1,611,384	724,673 Fleet/95
Insurance/96	331,175	37,026	368,201	165,588 Insurance/96
Facilities/97	889,949	99,497	989,446	444,975 Facilities/97
Interfund Services	3,563,876	398,446	3,962,322	1,781,938 Assume RFA Contract for support
ADD: Administrative Costs (see IDC Tab for detail)	1,010,890		1,010,890	
DEDUCT: Debt Service Cost -- Paid by City	(500,634)	(474,937)	(975,571)	* Saving in overhead cost not likely City to pay FS13 debt and new FS158 apparatus up to a total of \$6.5M
Total Department	29,254,838.04	2,830,248	32,085,086	26,462,010 Cost saving
Less FD40	(4,500,000)	-	(4,500,000)	(5,800,000) Eliminate Both FD 25&40 Contract Revenue
City and FD25	24,754,838	2,830,248	27,585,086	20,662,010 Net Exp Saving

Non-Tax/Benefit Charge Revenues: <sup>3</sup>				
EMS Levy (both)	1,116,500	-	1,116,500	(946,000) EMS Rev Loss
Permit etc fees	219,000	-	219,000	(219,000) Permit fee loss
Mitigation Fee	100,000	-	100,000	(100,000) Mitigation fee loss
General Revenue	1,435,500	-	1,435,500	
Amount Required from Property Tax/FBC	23,319,338	2,830,248	26,149,586	
Property Tax @ \$1 (both)	14,468,475		14,468,475	(13,475,049) Property Tax Loss
FBC Needed	8,850,863		11,681,112	

Equivalent Property Tax Rate	\$1.6117	\$0.20	\$1.81	5,921,961 Estimated Net Saving
Equivalent Property Tax Rate w/o Boeing		\$0.21	\$1.94	(333,968) Emergency Mgmt. retained
as % of City&FD25 budget	36%		42%	5,587,993
as % of Department Budget	30%		36%	\$0.415

FBC Maximum (60%as % of City&FD25 budget)

14,852,903

16,551,052

\* Assume City to pay FS15 construction and apparatus using in lumpsum using year 1 & 2 savings \$1.03 \$1.14

Note:

1. Assume bonding \$6.75 million for Station 15, equipment, & Apparatus
2. Potential Fee-in-lieu revenue needs to be negotiated (e.g. Kent is charging school district \$1.90/student, RUC \$8/Inmate, Boeing \$1000 per call )
3. The amount of FBC would require a 31 cents per gallon rate

Assessed Value Assumec	2014	2015 Preliminary	2016 Projected
Combined	\$12,067,000,000	\$13,779,499,587	\$14,468,474,566
Renton	\$11,250,000,000	\$12,833,380,312	\$13,475,049,328
FD25	\$817,000,000	\$946,119,275	\$993,425,239

Sample FBC Impact	\$4 Ft	\$ difference City	\$ difference City Reduce
Example Renton hom with \$260k AV	2,180	\$261	\$153
Example FD25 home with \$260k AV	2,180	\$131	\$131
Renton Business 1 800 SW 43rd/601 SW 41st	766,735	\$87,104	\$74,531
Renton Business 2 560 Hardie Ave SW	57,582	\$9,129	\$4,526
FD25 Business 1 12620 164th Ave SE	52,516	\$3,715	\$3,715



## RFA Steering Committee

The Regional Fire Authority (RFA) Citizen's Advisory Committee will play an extremely important role in the RFA process. The committee will be made up of a diverse group of stakeholders that represent the various groups we will be working with throughout the RFA creation process. In order to help focus the committee, we need to ensure they understand what their purpose, scope, authority, and time commitment is. It is very important for the committee to receive the information they need to successfully accomplish the objectives established for them. The following information includes the proposed mission statement, objectives, authority, and time commitment:

**Proposed Purpose Statement:** The purpose of the Regional Fire Authority (RFA) Citizen's Advisory Committee is to create a body of diverse stakeholders that will receive education on the history, operational challenges, and financial challenges of Renton Fire & Emergency Services. The committee will also receive information on a proposed solution to these challenges. After being presented with this information, the committee will be tasked with answering the following questions for the RFA Planning Committee:

1. Do you see the need to create a RFA?
2. What are some of the concerns that will likely be faced in attempting to form an RFA?
3. What are the things you want to ensure the Planning Committee considers in their deliberation?

**Authority:** The RFA Planning Committee is the body that will ultimately vote on whether or not the proposed RFA is placed on the ballot. The responses provided to the questions posed to the RFA Citizen's Advisory Committee will help the RFA Planning Committee make an informed decision on whether or not the proposed RFA should be placed on the ballot.

**Timeline:** The individuals tasked with making up the RFA Citizen's Advisory Committee will be asked to serve on the committee for a period of six months. Our target is to provide all of the education and information the RFA Advisory Committee will need to answer the questions we will be posing to them by May (we have allotted one additional month in case it is needed). The committee will meet once a month beginning in January. The tentative agenda for each of the meeting sessions is as follows:

- **January-** provide the committee with their purpose and objectives. Additionally, they will receive information on the history of Renton Fire & Emergency Services and an overview of how the department operates.
- **February-** provide the committee with information on the funding challenges and the operational challenges Renton Fire & Emergency Services is currently facing. Additionally, the committee will be provided with a proposed solution.
- **March-** provide the committee members with an opportunity to seek any additional information they may need to make informed decisions on the questions they have been asked to answer.
- **April-** bring the committee back together to receive their responses to the questions we have asked them to answer.





## RFA Steering Committee

**Important Considerations:** There are some key things the committee needs to be aware of including:

---

- The committee needs to understand that the issue hasn't already been decided.
- The committee needs to know they are not being tasked with helping to diffuse a difficult or controversial decision.
- The committee needs to realize that they bring a perspective that is both valued and needed.